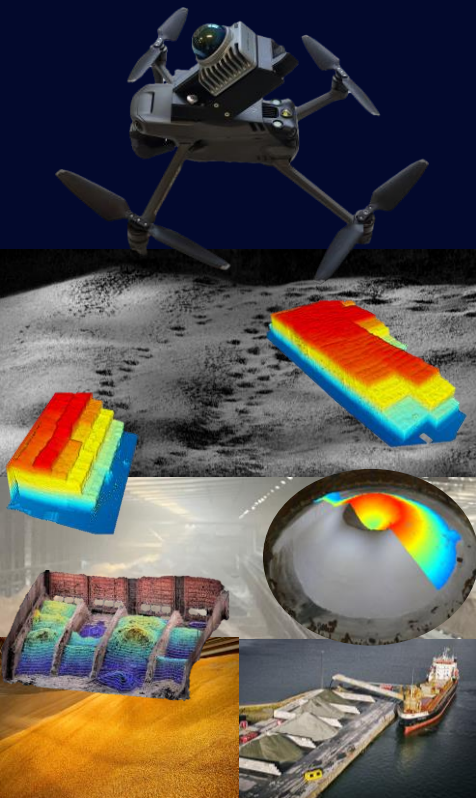




TINAMU

Self-Scanning Inventory Monitoring

- ✓ Precise, digital and fraud-free inventory data
- ✓ Real-time digital twin in- & outdoor with no GPS
- ✓ 6x faster inspections on drone or as handheld
- ✓ Immediate use with no installation nor CAPEX
- ✓ Algorithm-based analytics (volumes, units, etc.)
- ✓ Trusted data via reports, dashboard or APIs



TINAMU RMS Light LiDAR Kit Specs

- Developed for dusty environments & high accuracy (>99%)
- Safe & efficient (no site disruptions & 10x lower cost)
- 360° LiDAR plug&play kit for dji Mavic 3E/T or M4
- 15'+ flight time with 40m reach (10Hz + 200k points/s)
- Class 1 laser safety (eye safe)

Kit rental

RMS light LiDAR
plug & play Kit
with real-time
point cloud
(w/o drone)

CHF 299 / mts
(min. 12 mts. with
50% prepayment)

Cloud – Inspector

- Aligned point cloud
- Single volumes
- Unlimited scans

CHF 199 per asset per
month (yearly subscription)

Cloud – Site

- +Segmentation
- +Counting
- +Fraud detection

CHF 399 per asset per
month (yearly subscription)

Cloud – Enterprise

- +Density reconciliation
- +24/7 support
- +Dashboard & APIs

CHF 999 per asset per
month (yearly subscription)

Cloud – Inspection support

- CHF 500 per inspection at any asset or as bundle of 10 for CHF 4'000

Spot inspection with TINAMU pilot on site

- One time inspection CHF 2'500 per site per day (excl. travel and expenses, to be invoiced on top as occurred)

Note: 1 asset = 1 warehouse (four walls and a roof over 2'500m², compounds and smaller warehouses aggregated to 1 asset), silos, vessel or connected outdoor areas; Prices incl. remote training for data capturing, automated data processing and result creation, excluding taxes and shipping cost

TINAMU LABS AG
Staffelstrasse 10
8045 Zurich, Switzerland



Spin-off

ETH zürich

- ✓ Technological Innovator 2024
- ✓ ETH spin-off founded in 2018

TINAMU LABS AG

info@tinamu-labs.com

www.tinamu-labs.com